



**RAIKU**

brochure

may 2020

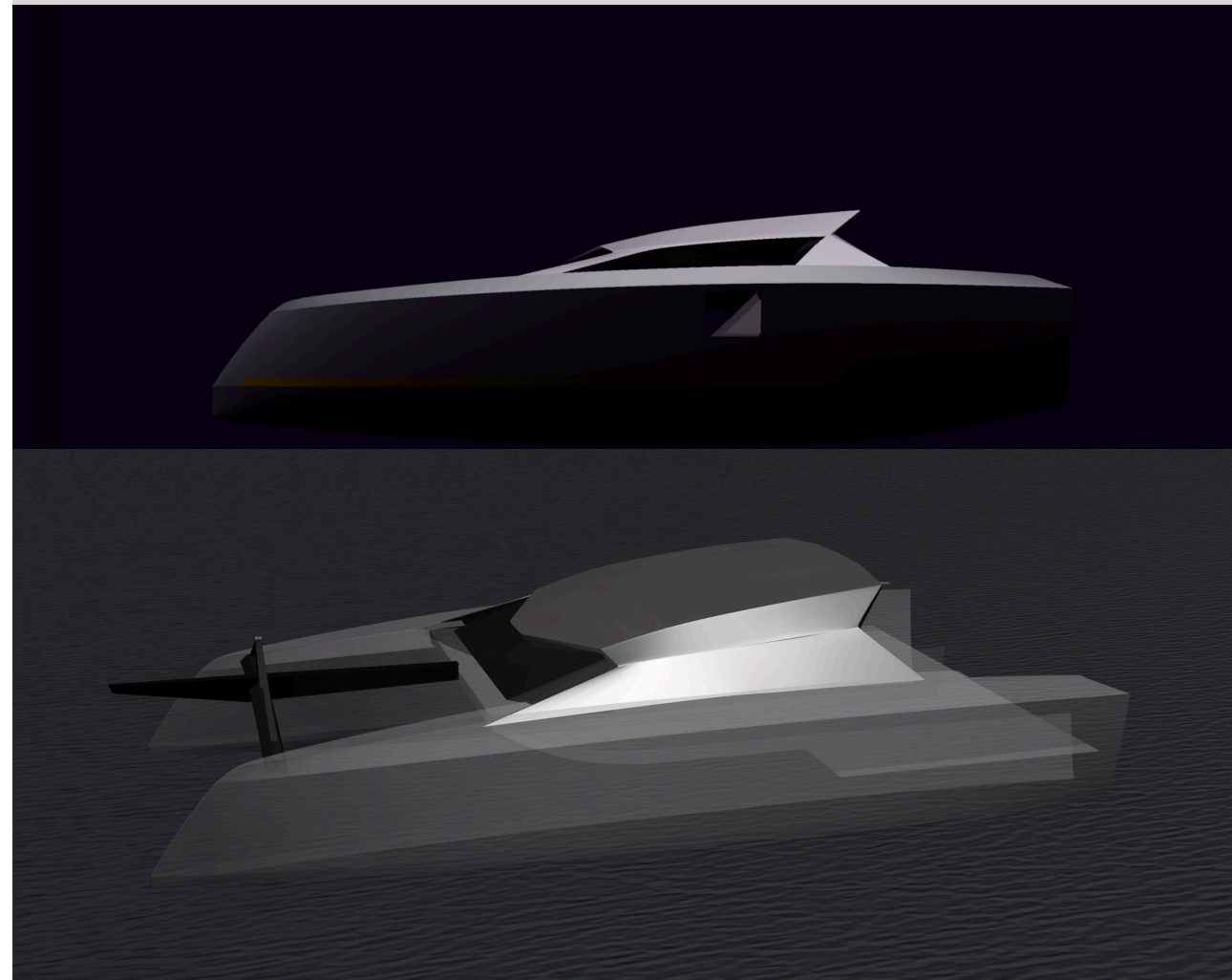
# Why Build ?

Production boats are a great solution for manufacturing to economies of scale and if there's one that's right for you it might be the best solution for your sailing lifestyle.

For the discerning yacht owner production boats often present compromises in important areas. The cost of tooling and the setting up of infrastructure for production runs means that the designs are generally focused on the broadest customer base possible.

For catamarans that usually means loads of accommodation space, classy interior fit-outs and not a lot of concern for light weight and low windage. Many production catamarans fail to deliver the kind of performance that we are lead to believe catamarans are capable of.

If your vision is one of a sailing boat that is agile, responsive and truly engaging to sail then custom kit construction, whether self built or carried out by a professional yard, provides a solution that opens doors to enhanced performance and custom design features. With kit construction we are freed from the constraints of the production process and free to adopt alternative solutions that may not be available in a production boat.





# RAKU

## WHY RAKU?

Your Raku design evolves as technology evolves. The Raku design is not dictated by the tooling, or the production process, or by the need for the design to cater to a broad cross section of the boat buying public.

At the foundation of the design and technology of the Raku cats is more than 30 years of experience designing some of the world's leading cruising and racing multihulls.

Raku heritage is built on successful production cats like the Chincogan and Lightwave cats, and racing boats that have consistently captured the trophies on the Australian racing circuit.

Sailing boats don't perform consistently at high levels by accident. Streamlined shapes above decks are essential to minimize wind resistance. Below the waterline good hull design evolves through continual refinement and careful attention to detail.

Low resistance at a range of speeds and sea states is important, and so is resistance to pitching, the ability to penetrate a short chop, and the ability to perform well with adequate wing clearance when fully loaded for voyaging and live aboard cruising.

The knowledge gained from highly competitive racing is fundamental to the advancement of hull design technology.



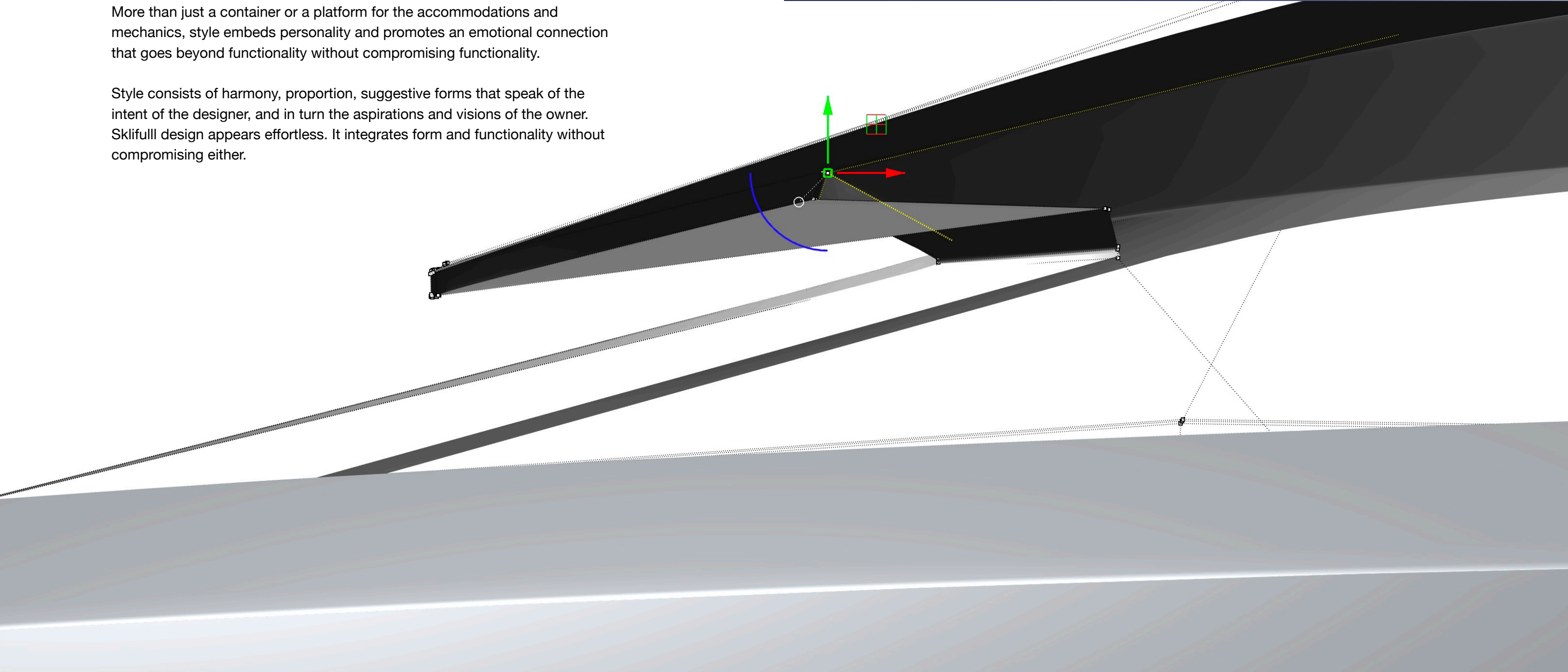
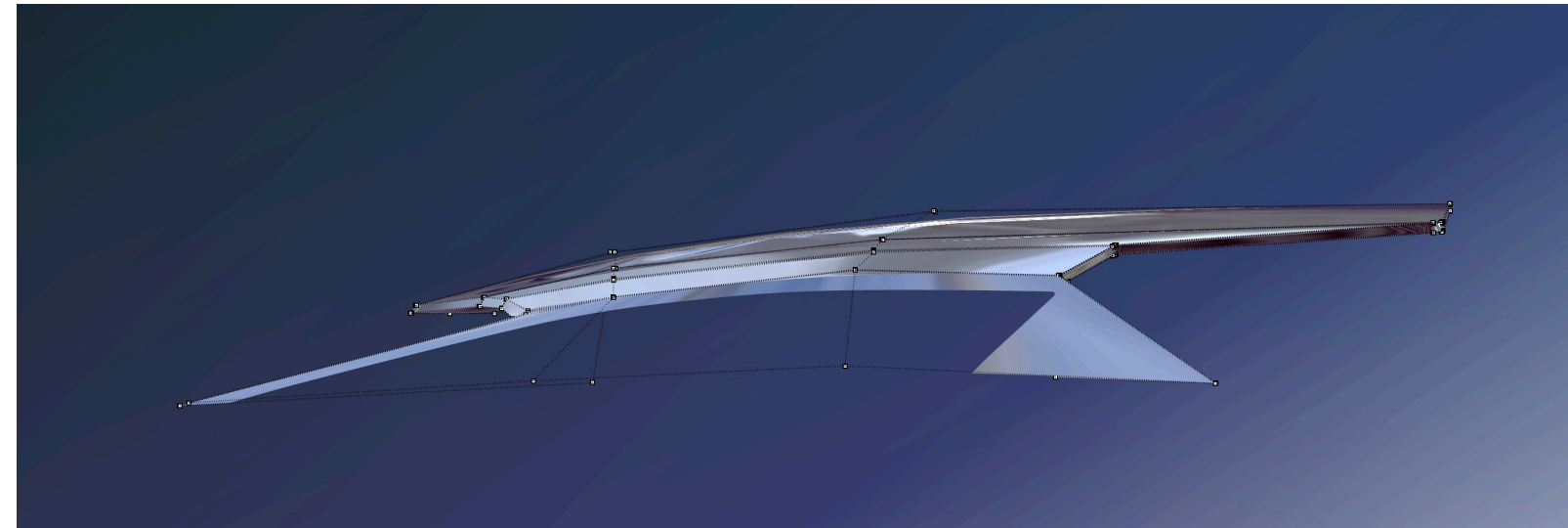


# RAKU STYLE

---

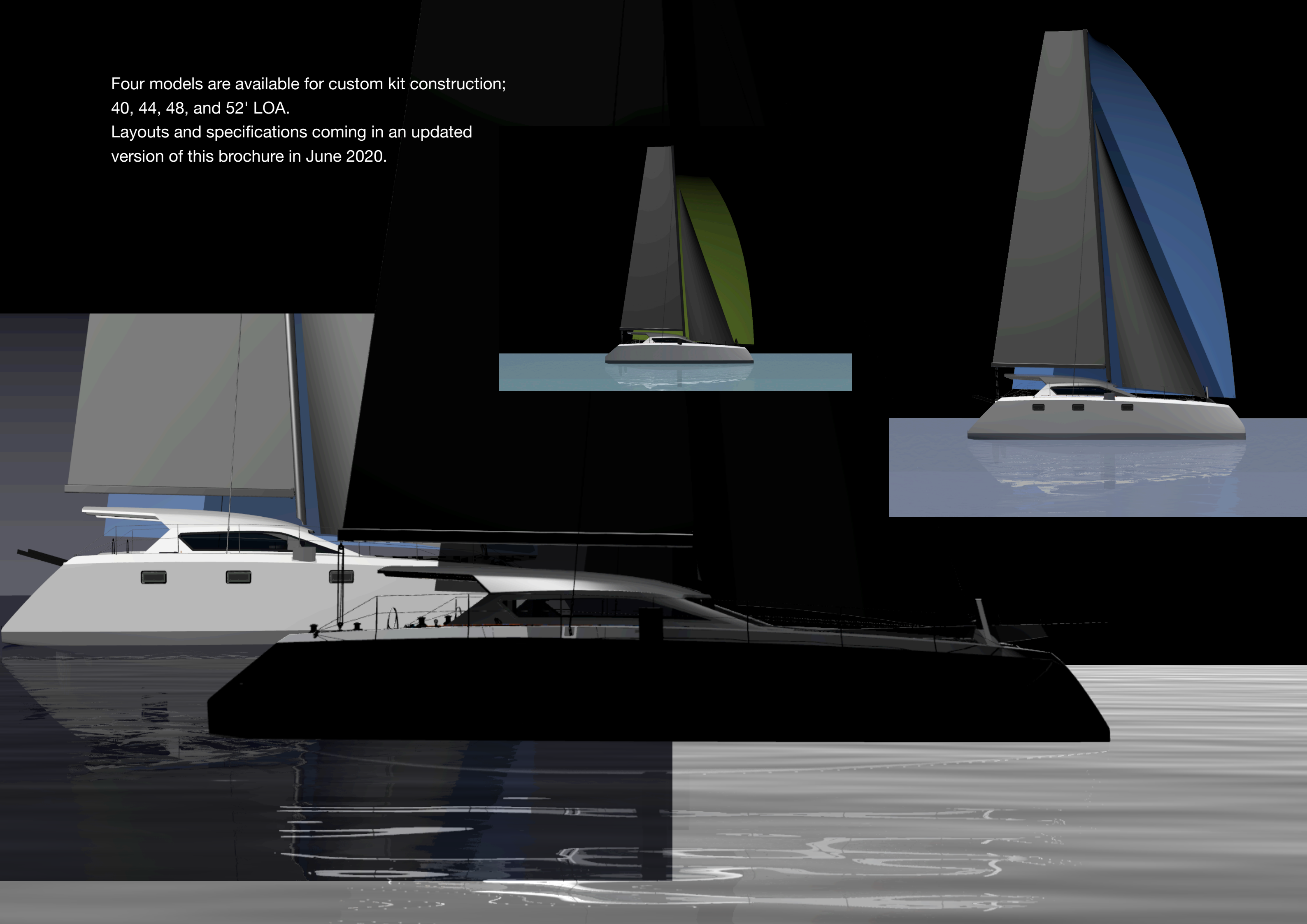
Style is a lot more than trendy details. Styling work is not done as an afterthought, It is part of the ethos of the design, integrated with layouts, with aero and hydrodynamics, with the fundamental functioning of the vessel. More than just a container or a platform for the accommodations and mechanics, style embeds personality and promotes an emotional connection that goes beyond functionality without compromising functionality.

Style consists of harmony, proportion, suggestive forms that speak of the intent of the designer, and in turn the aspirations and visions of the owner. Skilfulll design appears effortless. It integrates form and functionality without compromising either.





Four models are available for custom kit construction;  
40, 44, 48, and 52' LOA.  
Layouts and specifications coming in an updated  
version of this brochure in June 2020.





Raku 32 is the smallest boat in the Raku range. It is available only as a fully finished production boat, and not in kit form. Find out more about the Raku 32 on the web site [www.raku32.com](http://www.raku32.com)

# RAKU 32



RAKU



52



**RAIKU**

40





RAIKU

44



**RYUKU**

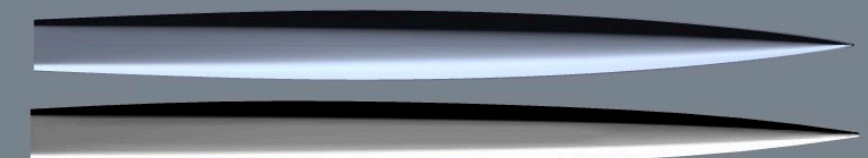
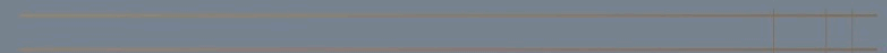
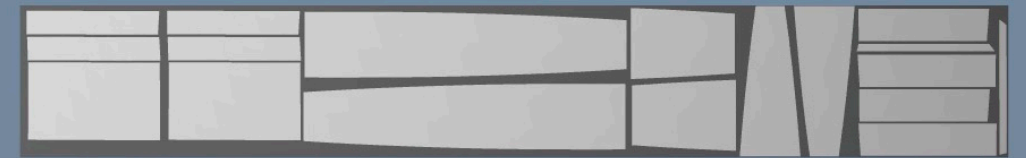
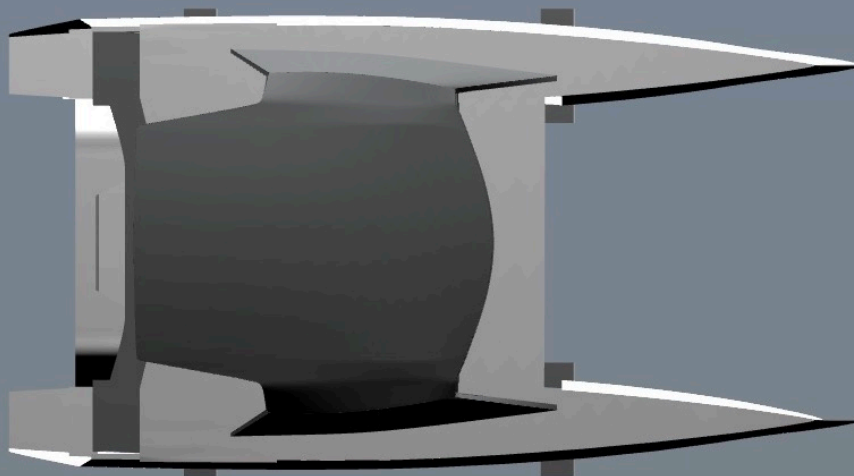
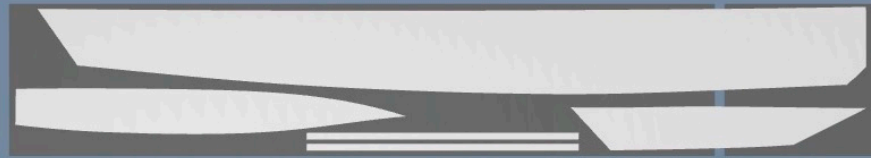
**48**



# RAKU KIT

Raku cats are designed for style and performance with simplicity and ease of construction securely at the heart of the design process.

Except for the hull shoes and some kerfing in the cabin tops the Raku cats are entirely built from flat panel kits, allowing for economical construction.



# Raku

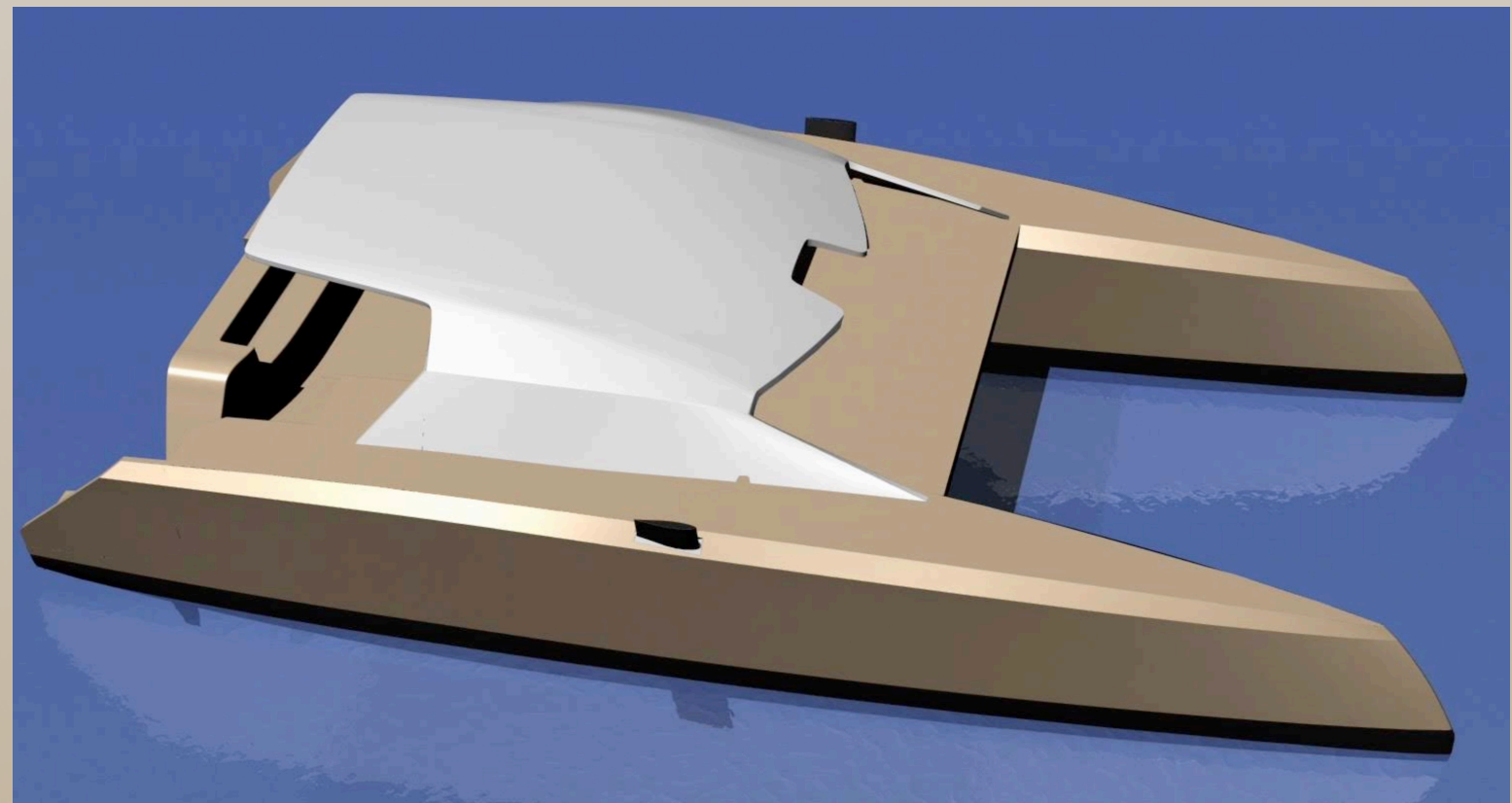
## custom build

Enquire with us about builders who can quote to provide hull shoes, boats complete to fit-out stage ready for you to complete in your own space and your own time, or fully built boats ready to sail away.

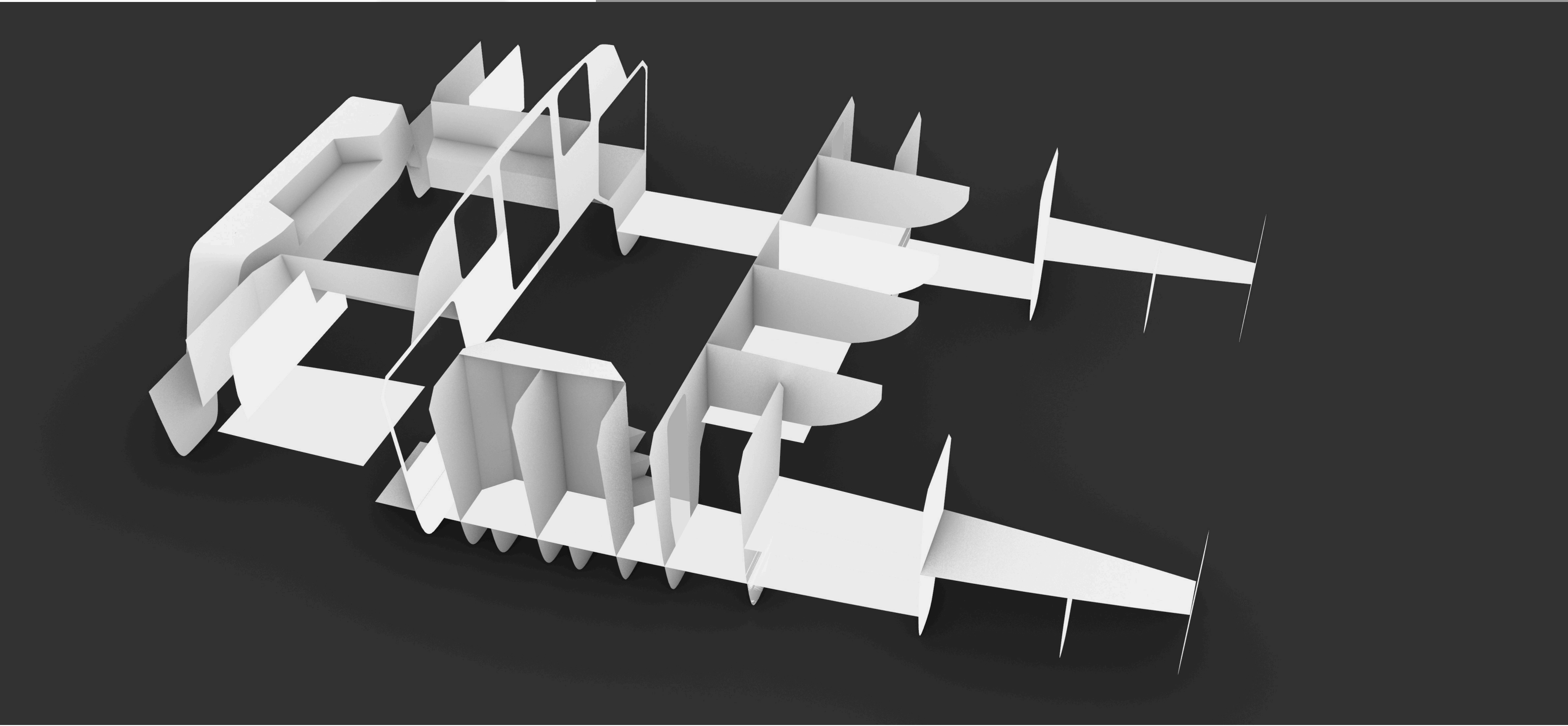
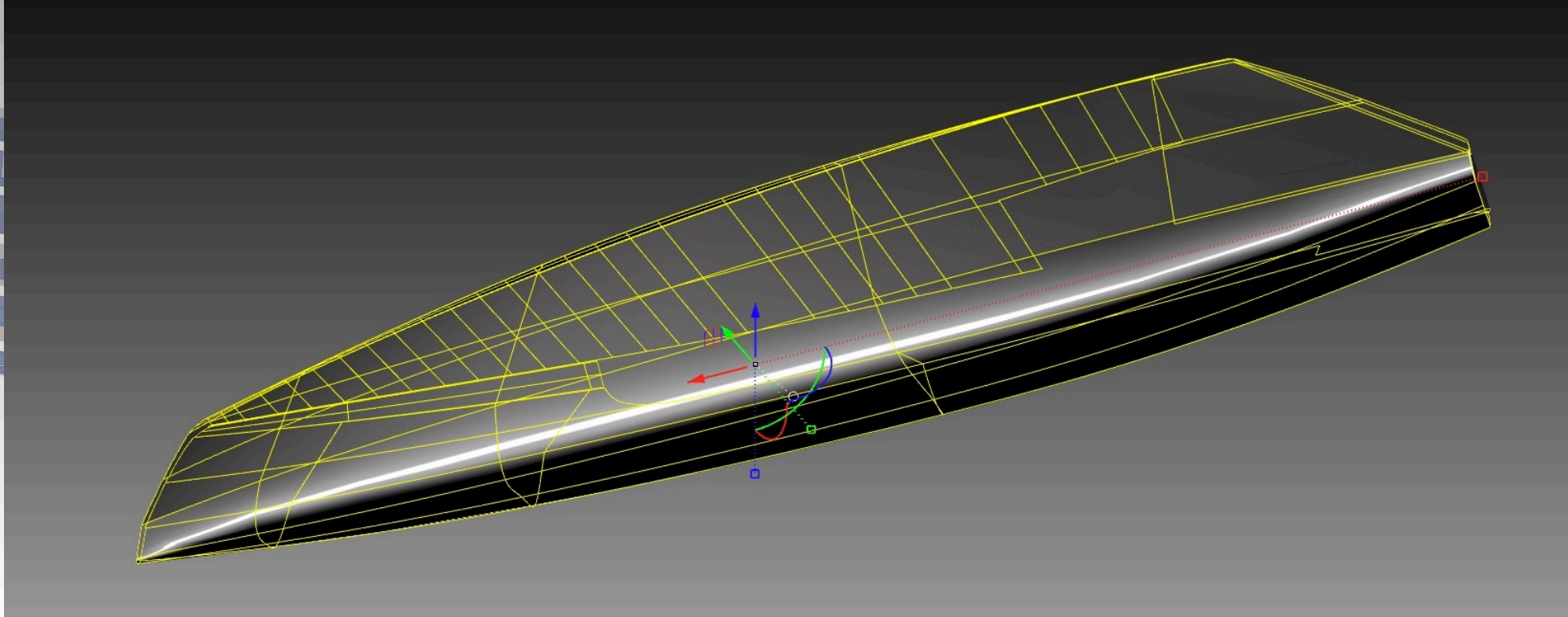
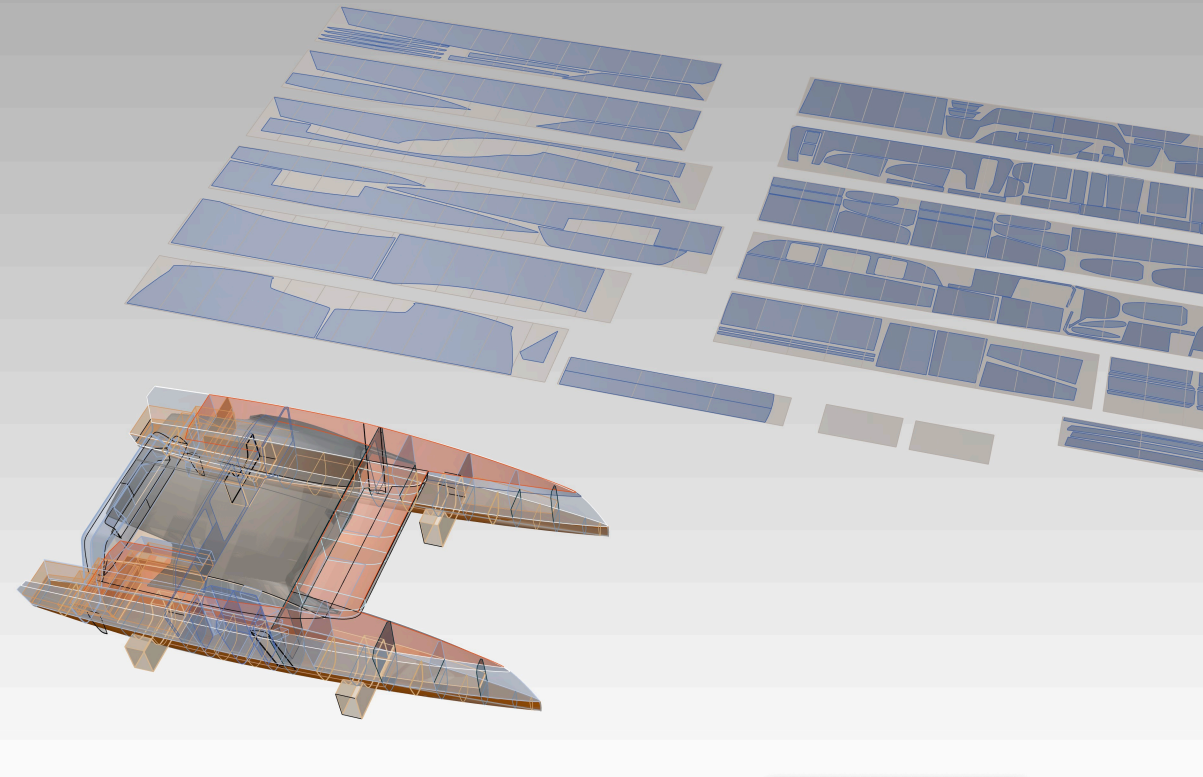
Raku kits are engineered to ISO Standard 12215-17 so you can achieve Certification CE

Custom engineering is also available to optimize boats for light weight and stiffness for enhanced performance.

Quality epoxy resins, a combination of stitched and knitted reinforcements and PVC foam cores make up the composite components for the Raku cats. Carbon is used for reinforcement in way of chainplates, forebeam, longeron and other highly loaded areas.







# deck planner

Our goal is to provide Raku owners and builders with realistic pricing information.

How much will my deck hardware cost? What is the best deck layout for my boat? Where to find good advice?

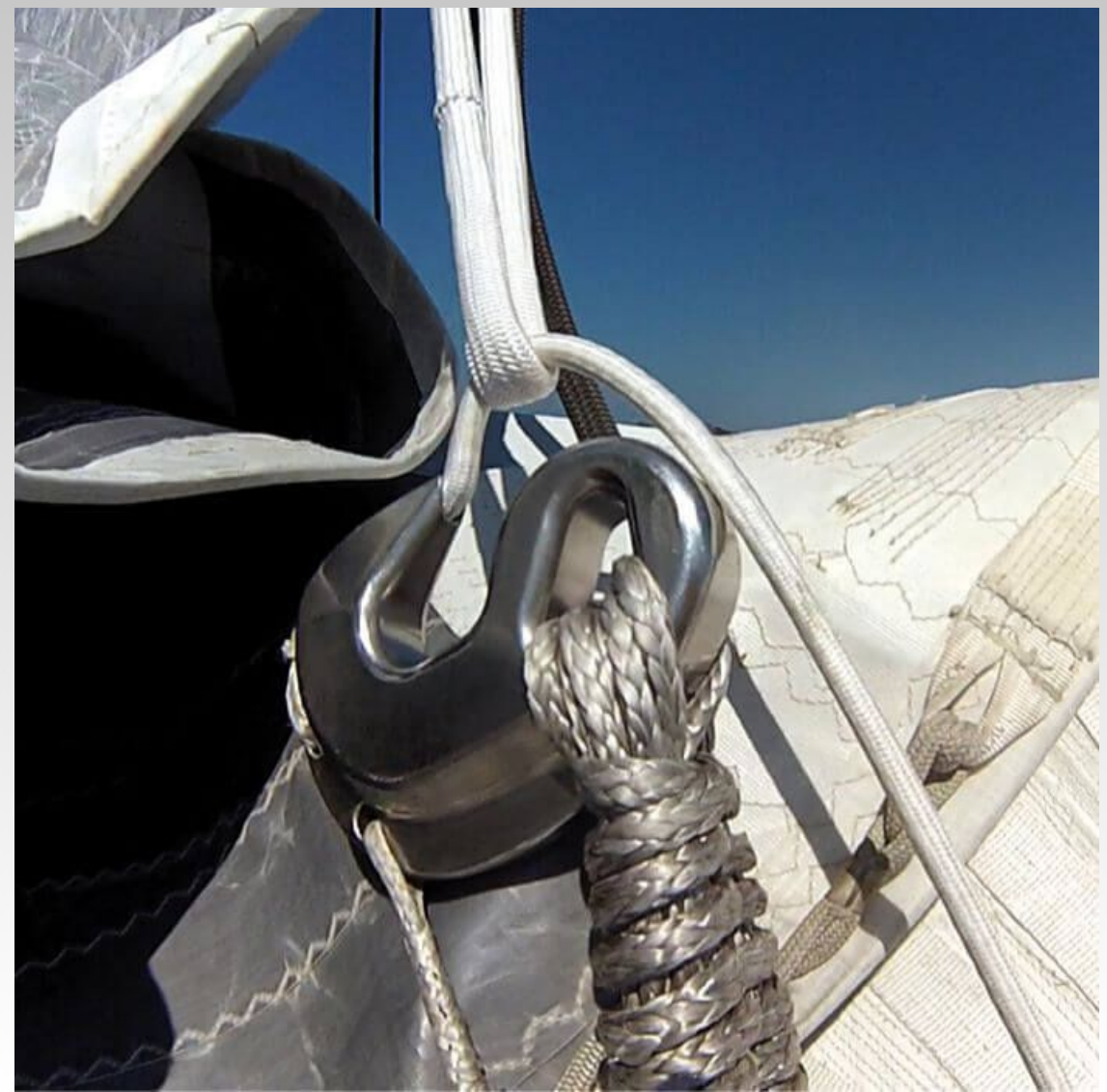
Raku Deck Planner is one of the solutions to answering these questions.

How it Works:

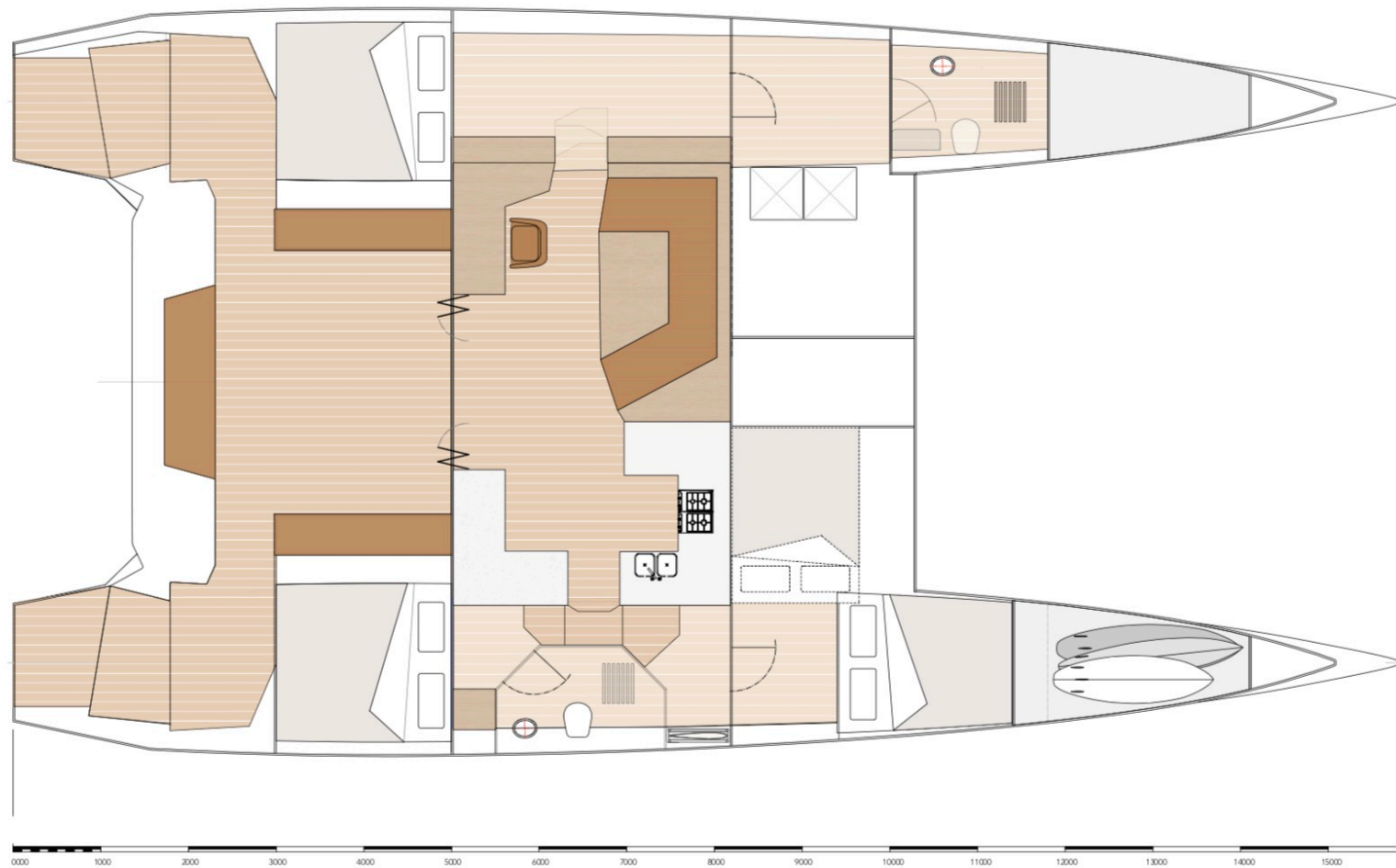
Purchase Study Plans for your chosen design and download the deck plans. Two or more layout options are provided depending whether you wish to take controls aft or leave them cleated at the mast.

Go to the [upffront.com](http://upffront.com) web site and select a range of winches, sail controls and rigging equipment using our guidelines and recommendations

When you're ready purchase your equipment online from Upffront for free delivery world wide.



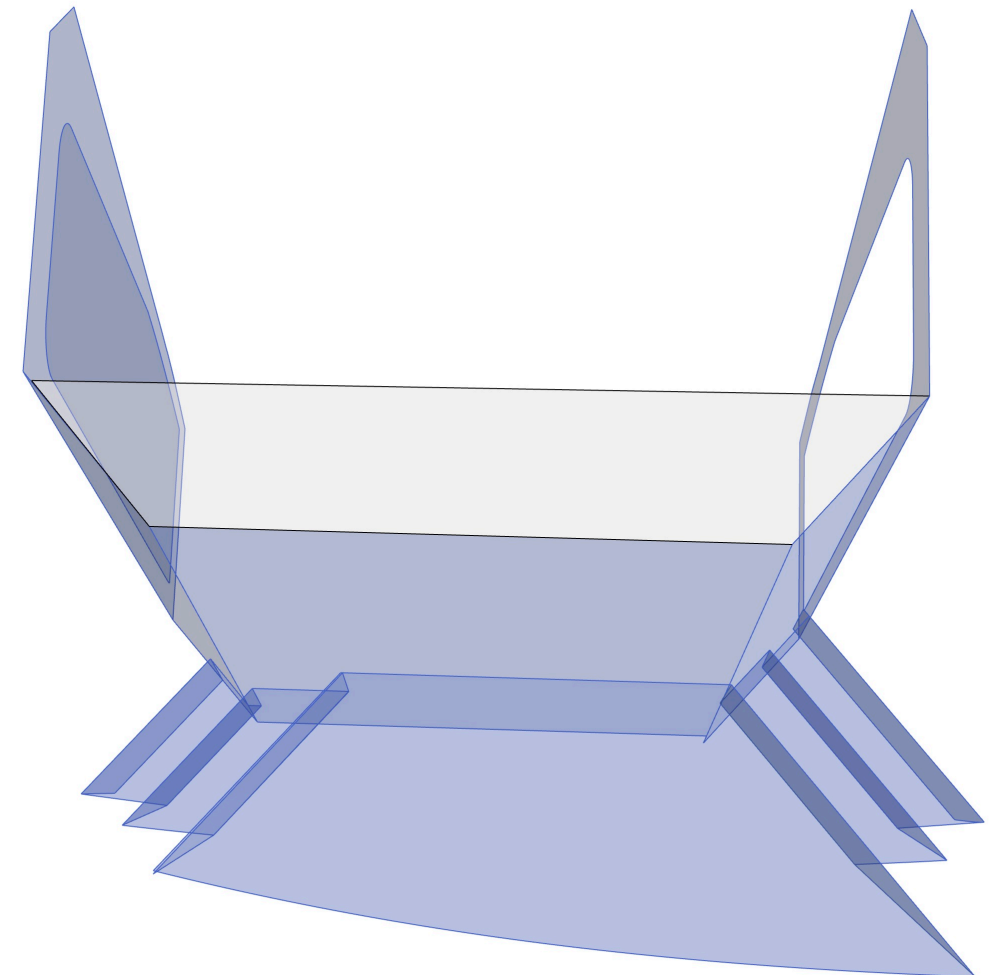




RAKU 52 LAYOUT-01

# LAYOUT OPTIONS

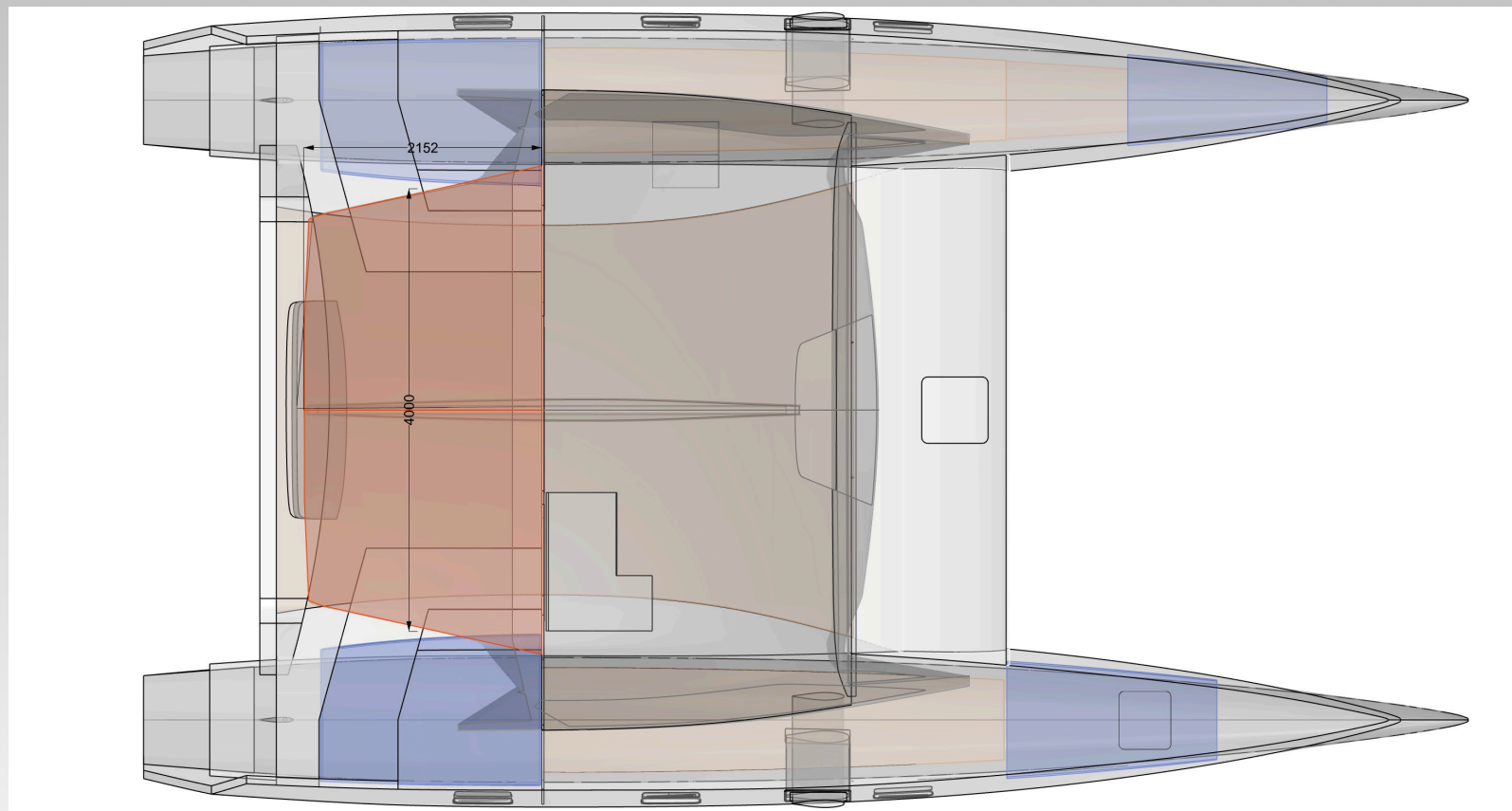
The central bathroom is the standard layout in the starboard hull. It can be deleted from the kit if not required or a second central bathroom to port can be added as an option.





# SHADE PROTECTED COCKPIT FOR WORK AND RELAXATION

The roof over the cockpit is free standing and provides a generous shaded area. It is supported by two beams that extend into the saloon



# PRICING GUIDES

Our Study Plans include pricing guidelines with the boat's components broken down into 15 different categories. For some categories (the main ones including kits, rigs, sails, engines) we can provide you with specific prices that have been provided by our recommended suppliers. For other categories we provide suggested specifications that you can use to do your own costing research and make purchasing decisions.

We welcome submissions from builders, equipment manufacturers and service providers to be included in our Partners Network and the Pricing Guides

# BUILDING GUIDE

The Guide to Composite Yacht Construction is provided inclusive with plans purchase for all Raku Designs. 59 pages in 9 parts covering a broad range of topics related to the build process

# PARTNERS NETWORK

A resource base of builders, riggers, sail makers and other professionals on hand to provide services and equipment for your project.

## GUIDE TO COMPOSITE YACHT CONSTRUCTION



# INTERIOR FURNITURE KITS

There are three options for purchasing materials for the saloon interior.

1. Purchase the plain panels as an add on to the kit. Design and manufacture your own interior furniture.

2. Purchase the standard CNC'd kit for either layout- Classic or Open.

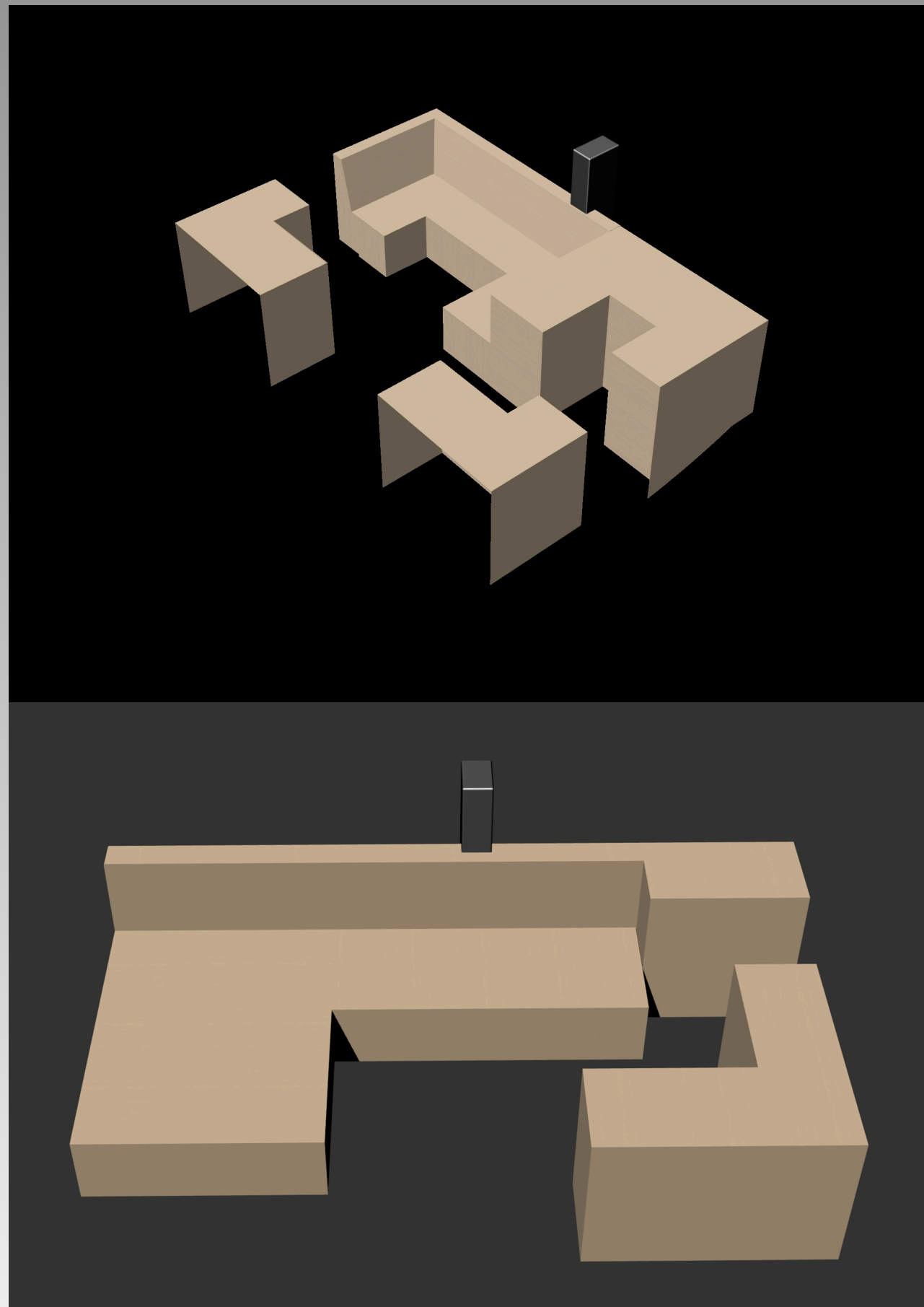
The Classic and Open Layouts use the same number of panels so the price is the same. Shelves and doors are not included - just the box structure as shown enthuse images.

3. Design your own custom layout and have it supplied with the rest of the kit. We can design your custom layout from sketches. Charges apply.

There are various materials available for the interior kits but we generally recommend H60 PVC core (12mm or 15mm) and glass skins for ease of working and bonding the corners.

Standard bench height is 950mm and 450mm for seats. We can customize that if you prefer up or down.

The upper image is the standard arrangement in the saloon of the classic layout, The lower image is the open layout with the wide doorway between the saloon and the cockpit. The mast post is shown in the forward part of the saloon but is not part of the furniture kit.





# Raku design options

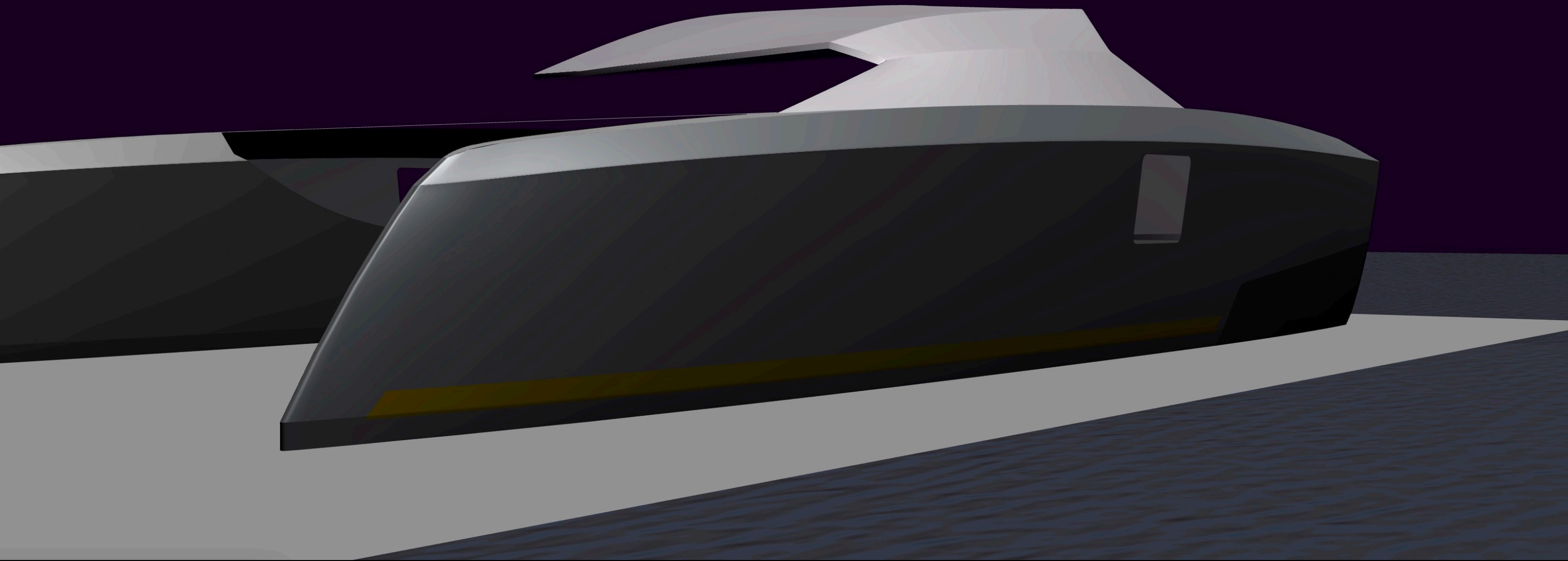
Dagger boards or fin keels

Classic saloon BH or wide open BH arrangement.

Standard longeron terminates level with the bow to keep marina fees in check

Optional longer longeron for big gennaker and boosted performance

Auxiliary power with diesel sail drives or Oceanvolt Electric power. Outboard engines are an option in the smaller size range but not recommended for trans ocean voyaging.



# more information

We aim to have detailed study plan information for all of the Raku Cats available in the first week of June 2020. This brochure will be updated with more details on the individual designs and there will be fresh information added to the web site.

We will have pricing for plans, Duflex kits, and prices from builders for hull shoes, boats completed to bare structure stage, and possibly completed boats ready to sail away.

Register your interest in further information by emailing Tony Grainger

[graingerdesigns@gmail.com](mailto:graingerdesigns@gmail.com)

[www.graingerdesigns.net](http://www.graingerdesigns.net)

